

NEW

Avoiding one of the most insidious cancer threats lurking **in the air** (!)

Consisting of radioactive particles, which can occur **anywhere anytime**. But we are **unable to recognize** them.

But our new high-tech scanner does **JUST THIS**. And will alarm you by your mobile phone.

Our research team aimed at the detection of these carcinogen particles in the air, to gather them qualitatively and to warn immediately, when they appear.

This new protection system is ready to be acquired for commercial as well as personal use.

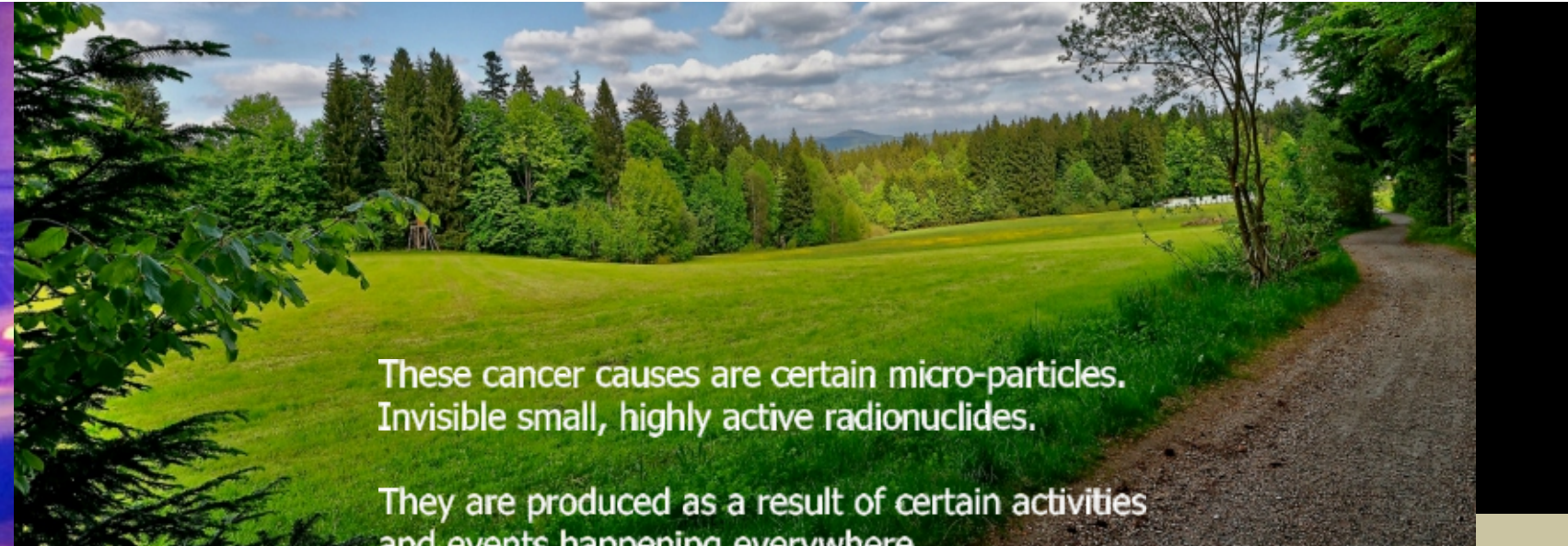
The task: developing a scanning device, which is scanning the environment permanently and automatically, evaluating the result of the scan by artificial intelligence (ai) and alarming you by your mobile phone in case of danger.

visualized principle of the 360° scan process - this happens inside the sensor fully electronically without moving parts >>>

Where do these life-threatening particles = radionuclides come from?

There are countless sources. Natural ones, but above all man-made ones, which are extremely dangerous. These sources can also be very far away and yet these radionuclides appear immediately in large quantities everywhere.

Possible causes: daily incidents in nuclear facilities, terrorism, industrial accidents, nuclear transport, nuclear medicine, military and weapons, sabotage, targeted poison attacks on individuals, groups, states, the legacy of Chernobyl, Fukushima and many nuclear tests, etc., etc., etc.



What are radionuclides?

They are unimaginably tiny particles (atoms) which permanently emit extremely dangerous energy impulses.

From the small brown spot in the middle, per second 300,000 "projectiles" are emitted which can be extremely destructive in living organisms.

They can occur in food and breathing air.

These particles are not perceptible. We have no sense organ for it.

Cancer - much later - shows, that they entered the body.

What is this great danger ?

Then these particles remain there in the organs.

And then they bombard cells and body tissues permanently with their destructive energy.

The deadly danger of cancer comes from the so-called **incorporation** of these particles.

Incorporation means the absorption of radionuclides with breathing air and food **into the body**.

Cancer is coming up as if permanently bombarded with x-rays!

The Tragedy

After incorporating radionuclides, you do not die immediately. On the contrary - you feel nothing at all. But the cancer grows unnoticed. But within years it will become visible. And **nobody knows the cause** then anymore - therefore radionuclides must not enter the body.

Only avoiding can achieve that.

Mindblowing:

the dismantling of nuclear power plants will produce millions of tons of radioactive construction waste.

And what are police, politics and authorities doing?

Who will warn you? - **Nobody!**
Who will protect you? - **Nobody!**
Who will help you? - **Nobody!**

You need to help yourself!

We will show you - how!

CPA system

The cellphone's functions

The cellphone serves only as a terminal display for possible messages from the CPA system.

The cellphone does not influence any function of the CPA system. The CPA system is fully functional, even if the cellphone is switched off.

The messages from the CPA system to the cellphone are telephone-sms type. Therefore, no internet connection, app, cloud or similar is requested. Neither your data can be collected or stored, because it does not appear in the Internet.



The result of our work is called: CPA Cancer Protection Autosystem.

It includes the development of a **new artificial sense organ (bionics)** for fast danger detection in combination with an **artificial intelligence system** to assess the sensor signal and includes a **real-time warning system** using **smartphone** alerting.

CPA CANCER PROTECTION AUTOSYSTEM

The CPA system is a worldwide new high-tech system - with no comparable product existing.

The CPA system can protect ALL types of objects very effectively:

homes, factories, yachts, warehouses

Further applications: Schools, supermarkets, holiday resorts, venues, production facilities, museums, hotels, agriculture, clinics, cruise ships, etc. etc.

Desireable would be a kind of "protection shield".

This is exactly what our research and development was aimed at - to create such a shield:

- permanent monitoring of the living environment
- immediate detection of danger
- immediate alert.

A super-guard was needed for that purpose! With a new sense organ!

The tasks are:

- observing
- evaluating
- alarming

Such a person does not exist! And will never too! And not just because of the lack of the special sense organ.

Therefore this super-guard had to be created - in form of a hi-tech system of bionics, cybernetics and artificial intelligence.

Here "he" is:

CPA CANCER PROTECTION AUTOSYSTEM

A worldwide new hi-tech scanning device - combines bionics, cybernetics and artificial intelligence, forming the requested super-guard

observing → evaluating → alarming

CPA sensor (bionics) = artificial sense organ, scanning permanently 360°

CPA ai electronic unit (artificial intelligence) = processing and evaluating of the sensor perception (cybernetics)

user mobile phone = real-time alert

Installing the CPA System

- The installing is simple and can be performed by a technician within one day.
- Detailed installation instructions are included.
- Complete software is included.
- User informations for the owner are included.
- Five different mobile phone numbers can be programmed for the alarming.
- Built-in test function for simulated alerting via mobile phone network.

building outside wall → inside the building

CPA Sensor → CPA electronic unit

Highest security - easiest of use

- The CPA system works fully automatically around the clock - 365 days and nights a year.
- You do not have to operate anything.
- You do not have to know anything.
- You do not have to learn anything.
- You do not have to take care for anything.
- The CPA system does not require any service.
- The CPA system has no wearing parts.
- The power consumption is only about 15 € / year.
- Ten years warranty.

The protection-shield has now become reality!

And your smartphone is even more important!

CPA ai electronic unit:
- Supply voltage = 200 - 250 vac / 50 Hz / single-phase
- Power consumption = less than 15 watts
- Dimensions = 500 x 400 x 210 mm
- Weight = 13,5 kg

CPA sensor-system:
- Dimensions = 190 x 100 mm
- Weight = 1,0 kg

CPA sensor-system cable length= max. 25 meters / 75 ft.

Caution: CPA sensor cable carries high voltage

Avoiding an insidious cancer threat!

This worldwide new hi-tech scanning device makes it possible. Modern hi-tech - you don't have to care about anything.

You can completely forget your CPA system - but your CPA system will NEVER forget YOU!

CPA CANCER PROTECTION AUTOSYSTEM

SCHAEFER PHYSIK since 1978

AI - Bionic - Cybernetic - Automation

SCHAEFER PHYSIK - Carstenstr. 12 - 25797 Wöhrden (Germany)
Fon: +49 4839-9530788 - mail@schaefer-physik.de
Internet: www.schaefer-physik.de

CPA CANCER PROTECTION AUTOSYSTEM

Technical Data:

Made in Germany CE-certified

Quality and reliability: each CPA system has been burnt-in and has been operated under real conditions for at least 2,000 hours before delivery

CPA ai electronic unit:
- Supply voltage = 200 - 250 vac / 50 Hz / single-phase
- Power consumption = less than 15 watts
- Dimensions = 500 x 400 x 210 mm
- Weight = 13,5 kg

CPA sensor-system:
- Dimensions = 190 x 100 mm
- Weight = 1,0 kg

CPA sensor-system cable length= max. 25 meters / 75 ft.

Caution: CPA sensor cable carries high voltage

integrated GSM module for alarming SMS to five different mobile phone numbers (programmable) at the same mobile phone provider

Installation and scope of delivery:
The CPA system can be easily installed by a technician within one day

included:

- complete installation material
- complete installation instructions
- complete software included
- user informations for the owner
- high-quality protection- and transport box (metal) 800 x 600 x 600 mm

CPA system ups - uninterruptible power supply (optional)

CPA system protection- and transport box

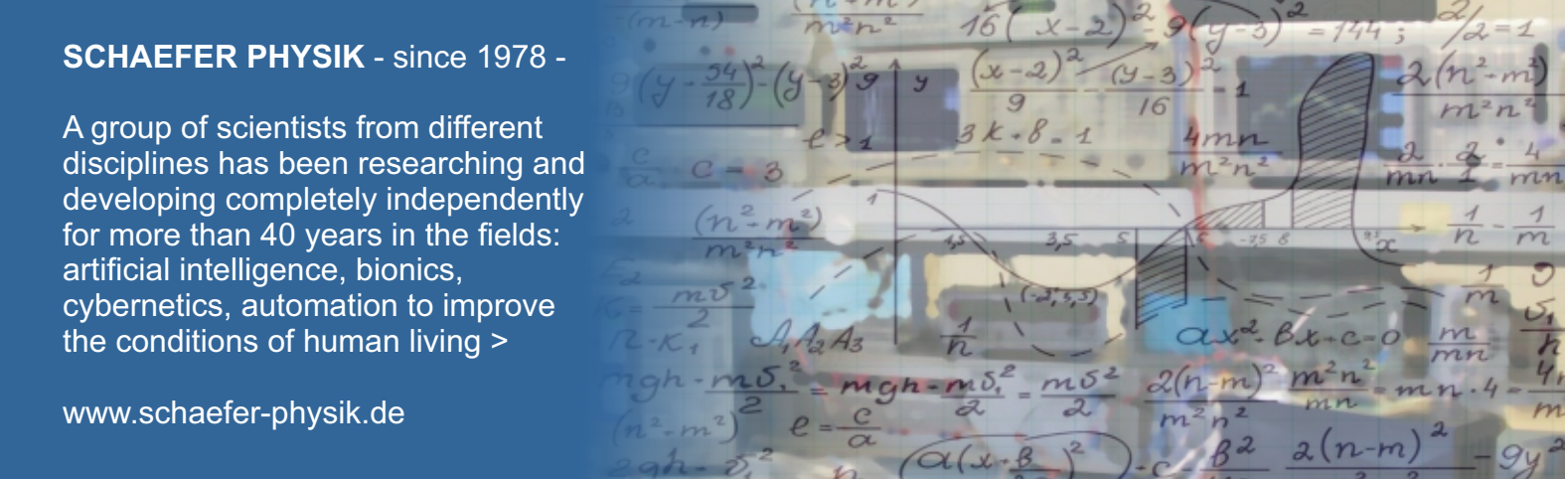
SCHAEFER PHYSIK - Carstenstr. 12 - 25797 Wöhrden - Fon: +49 4839-9530788 - mail@schaefer-physik.de

Who we are:

SCHAEFER PHYSIK - since 1978 -

A group of scientists from different disciplines has been researching and developing completely independently for more than 40 years in the fields: artificial intelligence, bionics, cybernetics, automation to improve the conditions of human living >

www.schaefer-physik.de



The greatest ignorance is the greatest danger (would you have known it?)

It is the **momentous confusion** of external radiation and incorporation of radionuclides.

The deadly danger of cancer is **not** caused by radiation - **but by unrecognized, highly active particles that enter the body with breathing air and food.**

The acute risk of cancer from radioactivity is **NOT** the external radiation - the problem is the **RADIATION SOURCE!**

Because: there is **no radiation WITHOUT radiation source!** radiation **can not fly around alone!** But the radiation sources (radionuclides) **are exactly doing that!**

Radiation is **ALWAYS** generated by radiating particles - so-called radionuclides! These are the **producers** of radiation. The radiation is always a **CONSEQUENCE** - not a CAUSE!

Accordingly, there is a **huge difference** between radiation and radiation source in terms of cancer risk to humans.

Radiation is **harmless** - but the radiation source is **deadly!** Radionuclides **are** the radiation sources.

These radionuclides can emit THREE types of radiation:
alpha radiation, beta radiation and gamma radiation:

radiation source → radiation
alpha-radiation
beta-radiation
gamma-radiation

Alpha and beta radiation = particle radiation = high-energy particles with **approx. only 1 m range**

Gamma radiation = electromagnetic wave = no particles with **very long range up to many kilometers**

Gamma radiation has very long range but is rather harmless and can be used for the early detection of radionuclides at great distances.
Gamma radiation is e.g. used in X-rays

and on an intercontinental flight the passenger receives e.g. the radiation dose of approx. 10 X-rays from outer space. This does not cause cancer.

On the other hand, alpha radiation and beta radiation are **highly dangerous particle radiation** - i.e. **material particles** - which act like **high-energy projectiles**. Both have only very small ranges of a few meters in the air - **but:**

However, if these **enter the body with breathing air or food** and are deposited in the organs, their range is sufficient to permanently bombard and destroy the surrounding cells and tissue structures and thus cause cancer. Cancer in the body is **NOT caused by external radiation**, but by **incorporated** radionuclides.

Example: The madness of the Chernobyl or Fukushima tourism:

People who visit these places get a Geiger counter that shows the gamma radiation emanating from the ex-nuclear power plant block. This is about as high as a few X-rays, but not very dangerous.

But the incredible amount of radionuclides "lying around" and "flying around" there and then being inhaled or ingested bring the deadly risk of cancer. These radionuclides are so small (atoms) that they are not kept away by any gas mask or DIY store respirator.

For us as physicists, it is incomprehensible how people voluntarily go there.

Apparently people have no idea of the huge difference between external radiation and the highly dangerous radionuclides.

The terrible consequences will only become visible after years, when the trip will long-time have been forgotten.

www.schaefer-physik.de > this page can be copied and shared

